

# MINI MULCH BUCKET TO SUIT MINI LOADERS

# DIGGA



Digga's Mini Mulch bucket is Australian designed and manufactured specifically for Mini loaders. The robust construction is designed with strength and durability in mind and is an essential addition to any mini loader.

The Mini Mulch Bucket is built tough and is able to handle a wide range of tasks. With its high sides and extra depth, it is perfect for material handling tasks, from light bulky materials like bark chip and mulch. The design is also ideal for blending organic lightweight materials together, the straight edge can also be used to scrape floors clean. 900mm, 1050mm and 1200mm sizes available.

## MACHINE SUITABILITY:

Stand-on Mini Loaders and Small Skid Steer Loaders.



### ■ OPENFACE DESIGN

Ideal for handling light and bulky material, such as bark chips and mulch. Suitable for landscaping, horse stables, feed lots and nurseries etc.



### ■ HEAVY DUTY COMPONENTS

- Heavy duty body.
- 12mm thick front straight edge.
- Reinforced pickup.



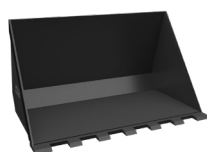
### ■ AUSTRALIAN MADE QUALITY

The Digga Mini Mulch Bucket is made right here in Australia from quality materials. Digga is a proud Australian manufacturer committed to keeping jobs in the country.

## ALSO AVAILABLE



Mini  
4 in 1  
Bucket



Mini  
GP  
Bucket

SPECIFICATIONS:	900	1050	1200
Bucket Width	900	1050	1200
Weight (kgs)	60	67	74
Struck Volume (m <sup>3</sup> )	0.133	0.156	0.178
Heaped Volume (m <sup>3</sup> )	0.169	0.185	0.231

NOTE: DIGGA MINI MULCH BUCKETS ARE NOT CERTIFIED AS A MEASURING DEVICE